

# # KIB NI ŐLCHASH

Date: \_\_\_\_\_

1. Nega KIB ni Őlchash kerak?

2. TŐNOMETRIYA

## Glaukoma Rivojlanishi Uchun Risk Faktorlar (xatar omillar)

1. YUQORI KIB

2. Katta Yosh 40+

3. IRQ (AFRIKAN ↑)

4. NASL

5. KŐRUV NERV DISKIDAGI Őzgarishlar

6. Pseudo disfoliativ Sindrom

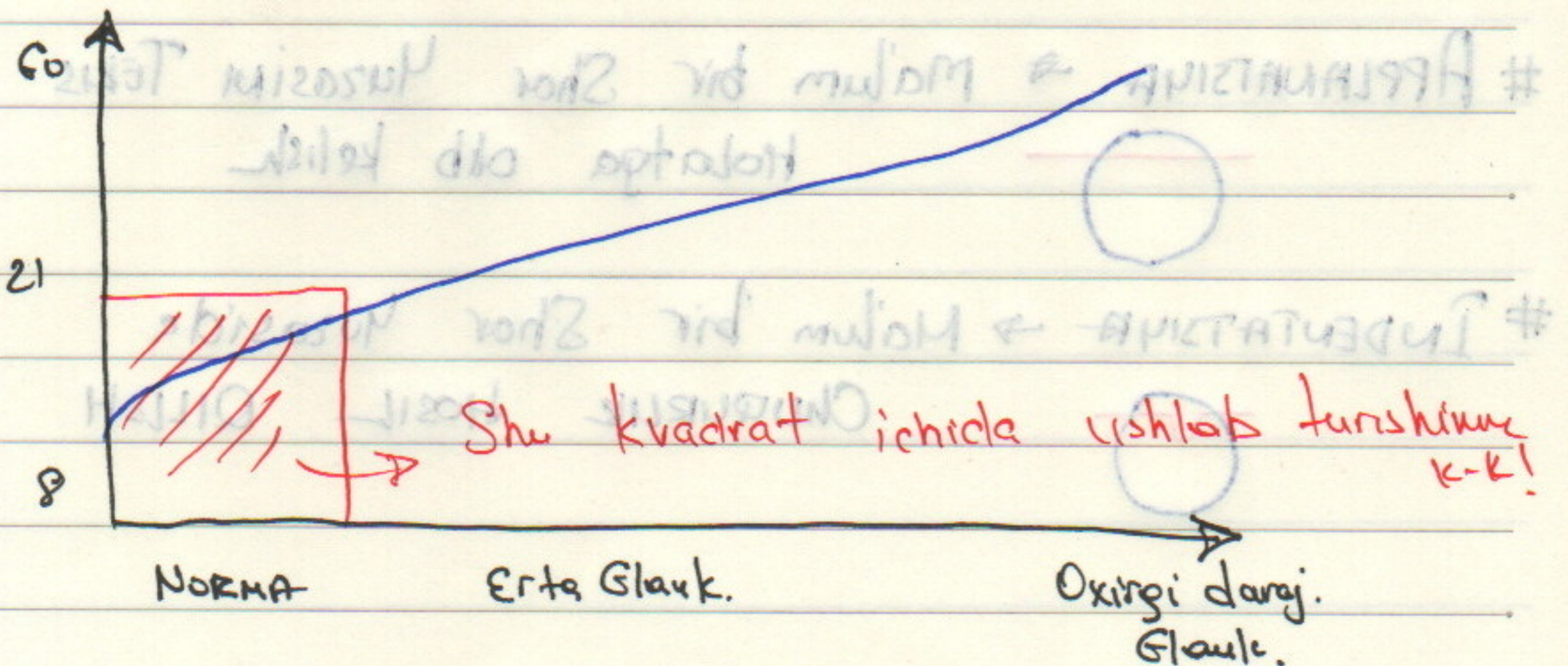
7. MIOPIYA

8. Qon Bosimi ↑

9. DM 2

→ ŐZGARTIRISHIMIZ MUMKIN

→ ŐZGARTIRILMAYMIZ



**TONOMETR - KIB NI OLCASH U-N ISHLATILINUUCHI ASBOS**

Date.

**TONOMETR**

**Kontaktless**

Havo quborilib Corneani qassilinishigacha kelgan vaqt hisoblaniladi  $t=p$   
 PNEUMOTONOMETR (NO CONTACT TONOMETR)

**Kontakt**

**Dinamik**



# SHOX PARDA YUZASIGA MAKSILIS SENSOR QOYILIB KIB OLCANADI

**Statik**

**Indentatsion (IMPRESSION)**

Konstant (Schiotz, 1905y) KUCH

Konstant indentatsiya (i Care)

**Applanatsion**

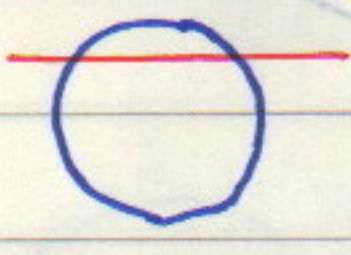
**Konstant maydon (Goldman, 1954)**

**Konstant kuch (Maklakov, 1885y)**

ENG ISHONCHLI TONOMETRIYA

\* Goldman TONOMETRI

# APPLANATSIYA → Ma'lum bir Shar Yuzasini Tekis Holatga olib kelish



# INDENTATSIYA → Ma'lum bir Shar Yuzasida chuqurlik hosil qilish

